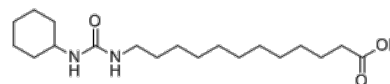


**Product Name** : CUDA  
**Cat. No.** : PC-70252  
**CAS No.** : 479413-68-8  
**Molecular Formula** : C<sub>19</sub>H<sub>36</sub>N<sub>2</sub>O<sub>3</sub>  
**Molecular Weight** : 340.5  
**Target** : Other Targets  
**Solubility** : 10 mM in DMSO



## Biological Activity

CUDA is a potent inhibitor of **sEH** (soluble epoxide hydrolase) with IC<sub>50</sub> of 11.1 nM and 112 nM for mouse sEH and human sEH, respectively.

CUDA blocks conversion of 1 μM 14,15-EET to 14,15-DHET by 94% at 10 μM in COS-7 cells.

CUDA activates PPARα 8-fold at a concentration of 10 μM but exhibits no effect on PPARδ or PPARγ.

## References

Morisseau C, et al. *Biochem Pharmacol.* 2002 May 1;63(9):1599-608.

Fang X, et al. *J Pharmacol Exp Ther.* 2005 Jul;314(1):260-70.

**Caution: Product has not been fully validated for medical applications. Lab Use Only!**

E-mail: tech@probechem.com